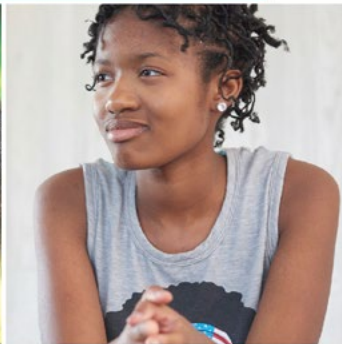




## post-permanency navigator

Information, resources,  
and referrals regarding  
post-adoption and  
post-guardianship  
support in Minnesota.



***"Thank you so very much for checking in with us.  
Knowing someone out there cares is nice."***

*- Kinship Adoptive Parent*

**Keep up the wonderful work and thank you for all the resources provided. This is a hard journey but your support helps make the road a bit easier to navigate.** - Adoptive Parent

FosterAdoptMN.org  
PPN@FosterAdoptMN.org  
612.746.5139

- › Free phone and email-based support for families who have recently finalized an adoption or Transfer of Permanent Legal & Physical Custody (TPLPC) of a child from the Minnesota foster care system.
- › Connection to appropriate state-specific supports and general post-permanency resources.
- › Follow-up communication and proactive check-ins to ensure you and your family have the support and resources you need.



*This program is funded through the Minnesota Department of Human Services.*

Find us on social media:     